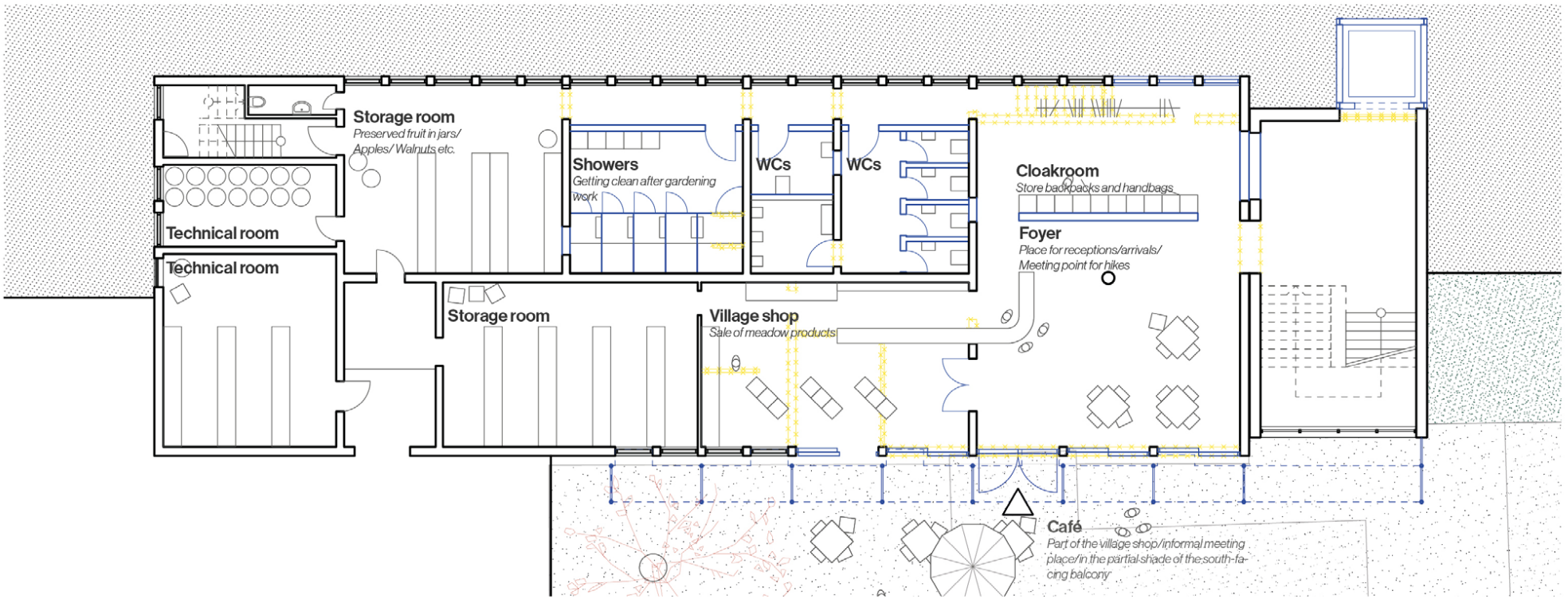


floor plan, ground level (orchard entrance) M 1:200



site plan, M 1:4000



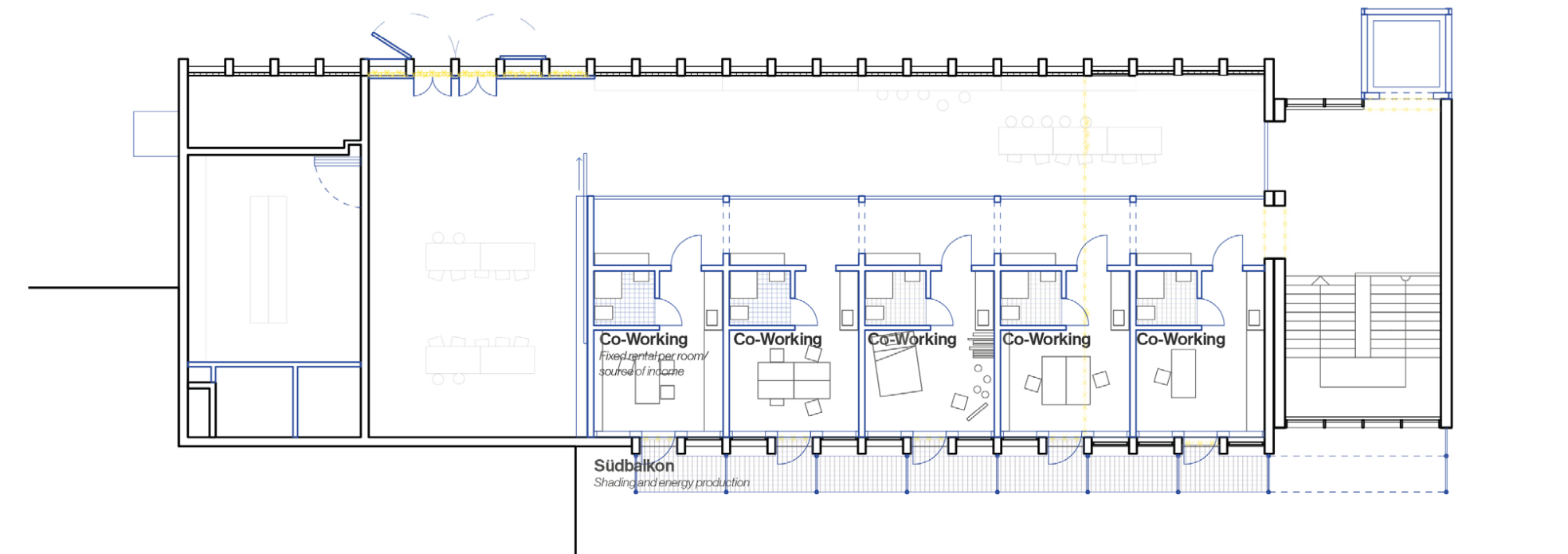
floor plan, underground level (cottage garden entrance), M 1:200

Context

Speichersdorf is nestled in the landscape of the Fichtelgebirge mountains and has excellent connections to Bayreuth and Nuremberg. The growing community is increasingly attracting young people, and with them comes a growing need for new forms of cohabitation, production, and interaction. This is where the transformation of the festival hall comes in. As an urban hub, it mediates between the train station, the main access road, and the planned new center. The ambitious program of the festival hall and its landscaped areas ties in with Speichersdorf's former significance as a stop on the Paris–Prague railway line – and at the same time exemplifies Europe's claim to develop site-specific solutions with transferable model character for Europe's rural areas.

Guiding Principle

The conversion of the festival hall will become the productive hub of the new village center of Speichersdorf. Between the productive landscape areas, the cottage garden in the south and the orchard meadow in the north, the converted festival hall will become a toolbox for rural life. The hall will be opened up in a targeted manner with minimal interventions. Five precise additions make it flexible and accessible. The adjacent open spaces will become a place of communal learning, with a focus on climate adaptation and biodiversity. The scope of the intervention and the diversity of functions enable rapid implementation and economical operation. The festival hall, cottage garden, and orchard meadow form a new ensemble of spaces forming a locally rooted response to Europe's structural challenges.



floor plan, first floor, M 1:200